



Costume Lookbook



Costume Lookbook

We are so excited to share our costumes and themes for [#WONKATTTFACTORY](#)

On the following pages you will find the costume photos and titles for each class, as well as a scrumdiddlyumptious description of the theme your dance class will be representing in our Annual Recital! In addition, we included a few more details about shoes, hair, tights, etc. As the season progresses, we will share even more!

We are so excited to develop each theme and routine and to showcase your tremendous dancing as we explore a world of pure imagination in our 13th Annual Recital!

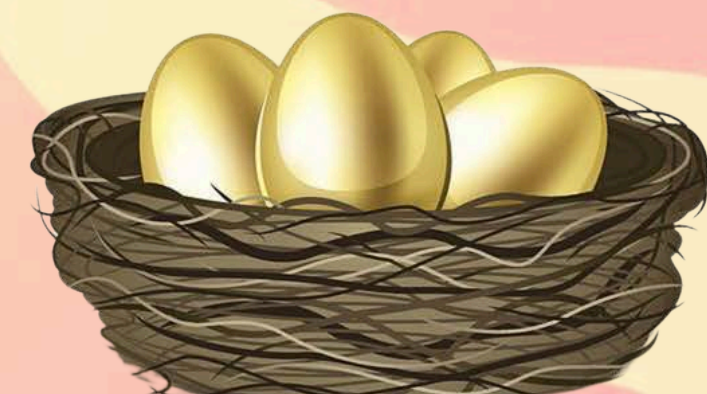
[Wonka's Tip Tap Toe Factory](#)

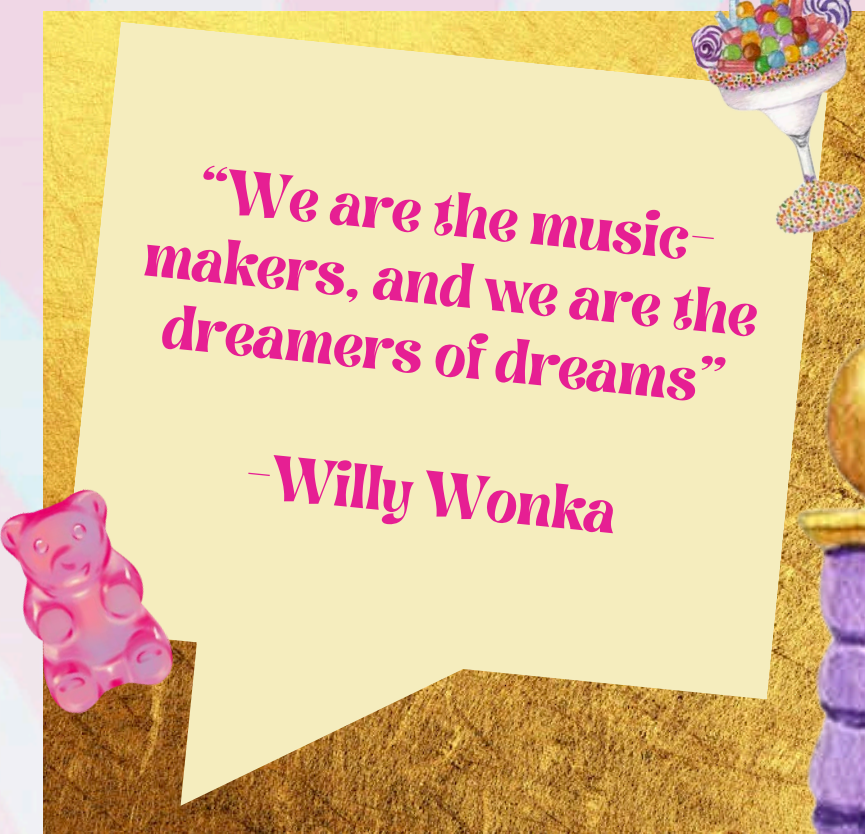
Please Note

Due to supply chain shortages, these costumes are subject to change. If any of these costumes need to be revised, you will be notified ASAP of any change.

Don't worry.. we are committed to making all of our costumes fit for an adventure in Willy Wonka's TTT Factory!




Thank you for understanding!





JUNE 21st
2025
Pinole Valley High School

Fun Facts

-  We are basing this show off the 1971 Version of Willy Wonka!
-  Planning for recitals begin in the summer before the new season!
-  Our cast each year is formed from our high school TTT dancers!



THE CANDY MAN!

Monday Tutu Toddlers 4:00 - 4:30

SHOES, TIGHTS, ETC.

Ballet Shoes

No Tights

White Ruffled Socks

Satin Bow Shoe Clips (provided)

HAIR/HAIR PIECES

Pretty hair (however you like pulled back)

Bow Hair Clip (provided)

WHO BRINGS SWEETS AND TREATS

GALORE,

WITH SURPRISES BEHIND EACH DOOR?

COLORS SWIRL IN HIS CANDY LAND,

WHO IS HE? THE CANDY MAN!





KIDS IN A CANDY STORE

Monday Ponytails & Pom Poms 5+ 4:15-5:00

SHOES, TIGHTS, ETC.

White Sneakers


No Tights

No Show White Socks

HAIR/HAIR PIECES

Pretty hair (however you like pulled back)

Blue Bow Hair Clip (provided)



**I'M A PLACE WHERE COLORS POP,
WITH SWEETS THAT NEVER SEEM TO
STOP.**

**LOLLIPOPS AND CHOCOLATE BARS,
GUMDROPS SHAPED LIKE TINY STARS.**

WHAT AM I?



POPPING POP ROCKS

Monday Intro to Tap 7+ 4:35-5:20

SHOES, TIGHTS, ETC.

Black Tap Shoes

Flesh Tone Tights

HAIR/HAIR PIECES

Bun (high or low)

Orange Bow Hair Clip (provided)

**I FIZZ, I CRACKLE, I POP WITH
GLEE,
WHAT KIND OF CANDY COULD I
BE?**





AY CARUMBA!

EDGE Petite/Junior Tap

SHOES, TIGHTS, ETC.

Black Tap Shoes

Flesh Tone Tights

Armbands (provided)

HAIR/HAIR PIECES

Bun (high or low)

Flower Barrette (provided)

**REVEALED IN THE SPRING, IT'S
YOUR SHINING TUNE,
WHAT'S THE NAME OF YOUR
DANCE FOR THE SHOW IN JUNE?**



HARD-KNOCK LIFE

EDGE Petite/Junior Musical Theater

SHOES, TIGHTS, ETC.

Jazz Shoes

Flesh Tone Tights

HAIR/HAIR PIECES

Bun (high or low)

Hair Ribbon (provided)

**REVEALED IN THE SPRING, IT'S
YOUR SHINING TUNE,
WHAT'S THE NAME OF YOUR
DANCE FOR THE SHOW IN JUNE?**





DOLLS

EDGE Senior Jazz

SHOES, TIGHTS, ETC.

Tan Jazz Shoes

Flesh Tone Tights

Pink Gloves (provided)

HAIR/HAIR PIECES

Bun (high or low)

**REVEALED IN THE SPRING, IT'S
YOUR SHINING TUNE,
WHAT'S THE NAME OF YOUR
DANCE FOR THE SHOW IN JUNE?**





WIND IT UP

EDGE Junior Jazz

SHOES, TIGHTS, ETC.

Tan Jazz Shoes

Flesh Tone Tights

Chocker (provided)

HAIR/HAIR PIECES

Bun (high or low)

**REVEALED IN THE SPRING, IT'S
YOUR SHINING TUNE,
WHAT'S THE NAME OF YOUR
DANCE FOR THE SHOW IN JUNE?**



BADDIES WITH A BAG

EDGE Teen/Senior Hip Hop

SHOES, TIGHTS, ETC.

Light Up Sneakers

Flesh Tone Tights

HAIR/HAIR PIECES

Bun (high or low)

Any additional pieces you were required to provide

**REVEALED IN THE SPRING, IT'S
YOUR SHINING TUNE,
WHAT'S THE NAME OF YOUR
DANCE FOR THE SHOW IN JUNE?**





SWING WITH ME

EDGE Teen Tap

SHOES, TIGHTS, ETC.

Black Tap Shoes

Flesh Tone Tights

HAIR/HAIR PIECES

Bun (high or low)

**Any additional pieces you were
required to provide**

**REVEALED IN THE SPRING, IT'S
YOUR SHINING TUNE,
WHAT'S THE NAME OF YOUR
DANCE FOR THE SHOW IN JUNE?**





CELL BLOCK TANGO

EDGE Senior Musical Theater

SHOES, TIGHTS, ETC.

Tan Jazz Shoes

Flesh Tone Tights

Black Gloves

HAIR/HAIR PIECES

Bun (high or low)

**REVEALED IN THE SPRING, IT'S
YOUR SHINING TUNE,
WHAT'S THE NAME OF YOUR
DANCE FOR THE SHOW IN JUNE?**



CHARLIE'S GRANDPARENTS

Monday Advanced Tap 7:30-8:20



SHOES, TIGHTS, ETC.

Tap Shoes


Flesh Tone Tights

HAIR/HAIR PIECES

Bun (high or low)

**FOUR GRANDPARENTS SNUG IN A BED,
TWO AT THE FOOT, TWO AT THE HEAD.
WHO STAYS PUT WHILE ADVENTURES
UNFOLD?
CHARLIE'S FAMILY, BOTH YOUNG AND
OLD!**





THE GOODSHIP LOLLIPOP

Tuesday Tutu Toddlers 2.5/3.5 Years Old 3:30-4:00

SHOES, TIGHTS, ETC.

Ballet Shoes

No Tights

White Ruffle Socks

HAIR/HAIR PIECES

Pretty hair (however you like pulled back)

Red Bow Hair Clip (provided)

**A SHIP OF SWEETS AND CANDY DROPS,
IT SAILS WHERE FUN AND LAUGHTER
POPS.**

**WHAT'S ITS NAME? THE GOODSHIP
LOLLIPOP!**



JUMPING FOR WONKA'S

Tuesday Beg/Int Hip Hop 8+ 4:10-5:00

SHOES, TIGHTS, ETC.

White Clean Sneakers

Flesh Tone Tights

HAIR/HAIR PIECES

Bun (high or low)

Scrunchie (provided)

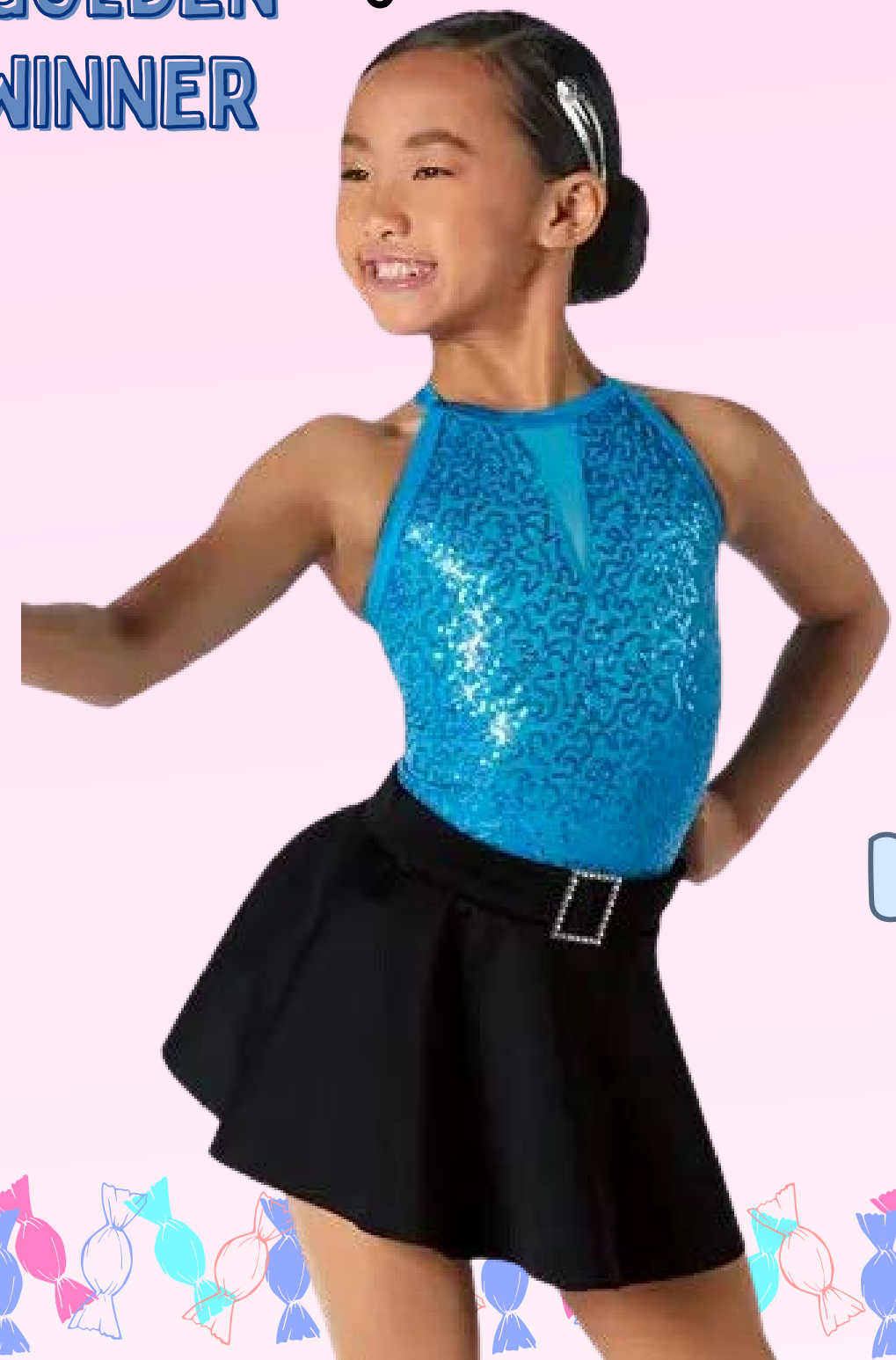
**I LEAP AND TWIRL, BOTH HIGH AND
FREE,
IN WONKA'S WORLD OF MYSTERY.
WHAT AM I? JUMPING FOR
WONKA'S CANDY!**





WONKAVISION!

**THE 4TH GOLDEN
TICKET WINNER**



**Tuesday Exploring Ballet/Jazz 6/7
4:10-5:00**

SHOES, TIGHTS, ETC.

Flesh Tone Tights

Ballet

Ballet Shoes

Blue Tutu

Jazz

Jazz Shoes

Black Skirt

HAIR/HAIR PIECES

Bun (high or low)

Rose Clip (provided)

Sparkly hair barrettes (provided)

**HE LOVES HIS SHOWS BOTH DAY AND
NIGHT,
A SCREEN-OBSSESSED AND PLAYFUL
SIGHT.
WHO IS HE? MIKE TEAVEE!**





WELCOME TO ENGLAND!

Tuesday Intermediate Tap 5:00-5:50

SHOES, TIGHTS, ETC.

Tap Shoes

Flesh Toned Tights

HAIR/HAIR PIECES

Bun (high or low)



I'M HOME TO CASTLES, TEA, AND


RAIN,

(RED BUSES ROLL DOWN EVERY LANE.)

WHERE AM I?

ENGLAND!





BACK IN THE U.S.A

Tuesday Beg/Int Tumble 7+ 5:00-5:50

SHOES, TIGHTS, ETC.

Barefoot/No Shoes

Flesh Convertible Tone Tights

Sparkly Arm Bands

HAIR/HAIR PIECES

Bun (high or low)

Velvet Hair Bow (provided)



**I LEFT FOR LANDS SO FAR AWAY,
BUT NOW I'M HOME AND HERE TO
STAY.**

WHERE AM I? IN THE USA!





A CHORUS LINE

EDGE Teen Musical Theater

SHOES, TIGHTS, ETC.

Jazz Shoes

Flesh Tone Tights

HAIR/HAIR PIECES

Bun (high or low)

Any additional pieces you were required to provide

**REVEALED IN THE SPRING, IT'S
YOUR SHINING TUNE,
WHAT'S THE NAME OF YOUR
DANCE FOR THE SHOW IN JUNE?**





THE HANGING TREE

EDGE Junior Contemporary

SHOES, TIGHTS, ETC.

Half Sole Shoes

Flesh Tone Convertible Tights

HAIR/HAIR PIECES

Bun (high or low)

**REVEALED IN THE SPRING, IT'S
YOUR SHINING TUNE,
WHAT'S THE NAME OF YOUR
DANCE FOR THE SHOW IN JUNE?**





YOU'VE NEVER HAD CHOCOLATE LIKE THIS!

Wednesday Musical Theater 8+ 4:00-4:50

SHOES, TIGHTS, ETC.

Jazz Shoes

Flesh Tone Tights

Short Gloves

HAIR/HAIR PIECES

Bun (high or low)

Hair Scarf (provided)

**I'M A TASTY TREAT, BOTH SMOOTH
AND SWEET,
I'M FUN TO EAT AND HARD TO BEAT.
WHAT AM I THAT'S SUCH A TREAT?**





**WHAT VERCUA
SAYS GOES**

**Wednesday Mini Ballerina/Tap 4/5
4:15-5:00**

SHOES, TIGHTS, ETC.

- No Tights**
- White Ruffled Socks**
- Ballet**
- Ballet Shoes**
- Pink Tutu**
- Tap**
- Tap Shoes**
- Sequined Peplum Skirt**

**VERCUA WANTS
A GOLDEN
GOOSE!**

HAIR/HAIR PIECES

- Pretty hair (however you like pulled back)**
- Pink Flower Hair Clip (provided)**

**SHE WANTS IT ALL, AND SHE WANTS
IT NOW,
WITH GOLDEN HAIR AND A HEART
THAT'S PROUD.
WHO IS SHE? VERUCA SALT!**





CHARLIE HASN'T FOUND ANYTHING

Wednesday Intermediate Ballet 5:00-5:50

SHOES, TIGHTS, ETC.

Ballet Shoes

Flesh Tone Tights

HAIR/HAIR PIECES

Bun (high or low)

Floral Jewel Hair Clip (provided)

**I'M HIDDEN SOMEWHERE, NOT IN
SIGHT,
LOOK AROUND WITH ALL YOUR
MIGHT,
FIND ME SOON AND FEEL DELIGHT!**



FIZZY LIFTING DRINKS

Wednesday Intro to Ballet 7+ 5:00-5:50

SHOES, TIGHTS, ETC.

Ballet Shoes

Flesh Tone Tights

HAIR/HAIR PIECES

Bun (high or low)

**Orange Flower Appliqué
(provided)**

**A DRINK THAT MAKES YOU FLOAT IN
THE AIR,
BUBBLES AND FIZZ ARE EVERYWHERE!
WHAT'S THIS DRINK THAT LIFTS YOU
HIGH?**

WONKA'S GOLDEN TICKETS

Wednesday My Special Person & Me 6:00-6:45

SHOES, TIGHTS, ETC.

Dancer

Jazz Shoes

Flesh Tone Tights

My Person

Gold Bow Tie (provided)

Black Dress Pants/Slacks

White Button Up Shirt

HAIR/HAIR PIECES

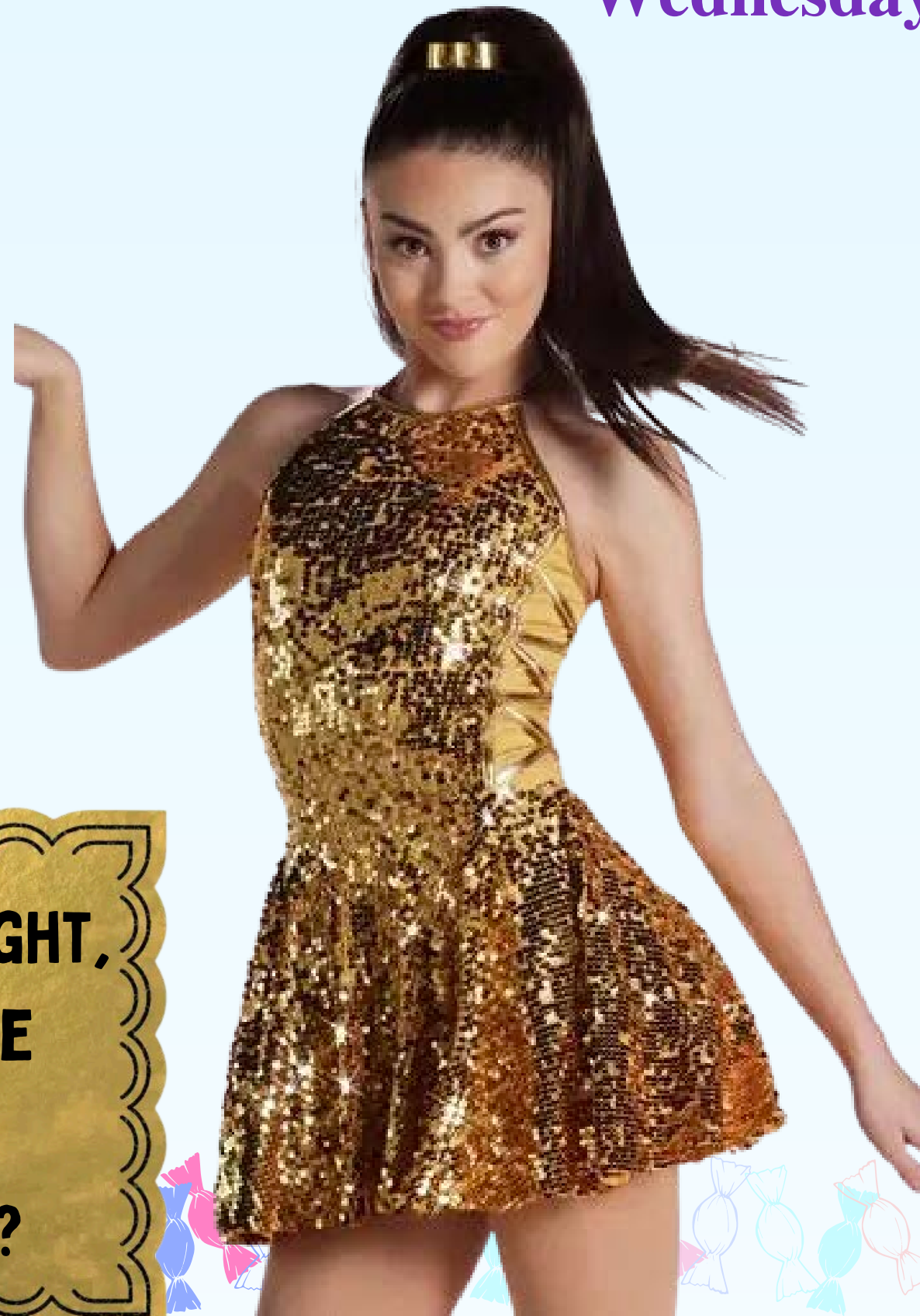
Dancer

Bun (high or low)

My Person

Neat and Nice (whatever you like)

Top Hat (provided)



**A SHINY TICKET, OH SO BRIGHT,
IT OPENS DOORS TO PURE
DELIGHT.
WHERE CAN YOU FIND IT?**





ORDER UP!

EDGE Petite/Junior Hip Hop

SHOES, TIGHTS, ETC.

Hip Hop Shoes

Flesh Tone Tights

HAIR/HAIR PIECES

Bun (high or low)

Visor

**REVEALED IN THE SPRING, IT'S
YOUR SHINING TUNE,
WHAT'S THE NAME OF YOUR
DANCE FOR THE SHOW IN JUNE?**





TOY SOLDIER

EDGE Petite Jazz

SHOES, TIGHTS, ETC.

- Black Jazz Shoes**
- Flesh Tone Tights**
- Knee High Socks**

HAIR/HAIR PIECES

- Bun (high or low)**
- Soldier Hat**

**REVEALED IN THE SPRING, IT'S
YOUR SHINING TUNE,
WHAT'S THE NAME OF YOUR
DANCE FOR THE SHOW IN JUNE?**





SURFS UP!

EDGE Mini Jazz

SHOES, TIGHTS, ETC.

Jazz Shoes

Flesh Tone Tights

Beach Towel

HAIR/HAIR PIECES

Bun (high or low)

Polka Dot Headband

**REVEALED IN THE SPRING, IT'S
YOUR SHINING TUNE,
WHAT'S THE NAME OF YOUR
DANCE FOR THE SHOW IN JUNE?**

**THE GOLDEN NEWS OF
AUGUSTUS GLOOP**

Thursday Mini Ballerina/Tap 4/5

3:30-4:15

SHOES, TIGHTS, ETC.

No Tights

White Ruffled Socks

Ballet

Ballet Shoes

Red & White Tutu

Tap

Tap Shoes

Red Fringe Skirt

HAIR/HAIR PIECES

**Pretty hair (however you like pulled
back)**

Red hair bow (provided)

**WHAT HAPPENS
WHEN YOU GUZZLE
UP SWEETS?**

**HE LOVES TO EAT, AND NEVER
STOPS,
(CHOMPING SWEETS AND CHOCOLATE
POPS.
WHO IS HE? AUGUSTUS GLOOP!**





VIOLET, YOU'RE TURNING VIOLET!

VIOLET IS A WINNER... AGAIN



Thursday Exploring Ballet/Jazz 6/7

4:00-4:50

SHOES, TIGHTS, ETC.

Flesh Tone Tights

Ballet

Ballet Shoes

Purple Tutu

Jazz

Jazz Shoes

Purple Fringe Skirt

HAIR/HAIR PIECES

Bun (high or low)

Purple Tulle bow (provided)

**SHE CHEWS A GUM THAT'S QUITE A TREAT,
TURNS PURPLE WHEN SHE CAN'T BE BEAT.**

WHO IS SHE? VIOLET BEAUREGARDE!



WORK IT

EDGE Senior Tap

SHOES, TIGHTS, ETC.

Tap Shoes

Flesh Tone Tights

HAIR/HAIR PIECES

Bun (high or low)



**REVEALED IN THE SPRING, IT'S
YOUR SHINING TUNE,
WHAT'S THE NAME OF YOUR
DANCE FOR THE SHOW IN JUNE?**





TOOK THE NIGHT

EDGE Teen Jazz

SHOES, TIGHTS, ETC.

Jazz Shoes

Flesh Tone Tights

HAIR/HAIR PIECES

Bun (high or low)

**REVEALED IN THE SPRING, IT'S
YOUR SHINING TUNE,
WHAT'S THE NAME OF YOUR
DANCE FOR THE SHOW IN JUNE?**





A WORLD OF IMAGINATION

Thursday Pre-Pointe 6:00-6:50

SHOES, TIGHTS, ETC.

Ballet Shoes

Flesh Tone Convertible Tights


HAIR/HAIR PIECES

Bun (high or low)

Scrunchie (provided)

**IN THIS PLACE, DREAMS TAKE
FLIGHT,
WHERE ANYTHING'S POSSIBLE,
DAY OR NIGHT.**





THE LAST GOLDEN TICKET

Thursday Pointe 6:00-6:50

SHOES, TIGHTS, ETC.

Ballet Shoes

Flesh Tone Tights

HAIR/HAIR PIECES

Bun (high or low)

Leaf Appliqué (provided)

**ONE TICKET LEFT, IT'S HARD TO
FIND,
A GOLDEN PRIZE FOR THE LUCKY
MIND.**

WHERE WILL IT GO? WHO WILL WIN?





P R A Y I N G

EDGE Senior Contemporary

SHOES, TIGHTS, ETC.

Barefoot/No Shoes

Flesh Tone Convertible Tights

HAIR/HAIR PIECES

Bun (high or low)

**REVEALED IN THE SPRING, IT'S
YOUR SHINING TUNE,
WHAT'S THE NAME OF YOUR
DANCE FOR THE SHOW IN JUNE?**



A young woman with blonde hair in a bun, wearing a black sleeveless dress with a high slit, is captured in a dynamic dance pose. She is looking upwards and to the right, with her right arm raised and bent at the elbow, and her left arm extended downwards. The background is a light blue gradient, framed by a decorative border of colorful, wrapped candies in shades of blue, pink, and teal.

WHEN DOVES CRY

EDGE Teen Contemporary

SHOES, TIGHTS, ETC.

Half Sole Shoes

Flesh Tone Tights

HAIR/HAIR PIECES

Bun (high or low)

**Any additional pieces you were
required to provide**

**REVEALED IN THE SPRING, IT'S
YOUR SHINING TUNE,
WHAT'S THE NAME OF YOUR
DANCE FOR THE SHOW IN JUNE?**



TEACHER ASSISTANTS

2024-2025

SHOES, TIGHTS, ETC.

**Required Dance Shoes for your
Assistant Class**

Flesh Tone Tights

Print Stirrups (provided)

Short Gloves (provided)

HAIR/HAIR PIECES

Bun (high or low)



OOMPA LOOMPA DOOMPETY DOO

I'VE GOT A PERFECT PUZZLE FOR YOU

OOMPA LOOMPA DOOMPETY DEE

IF YOU ARE WISE, YOU'LL LISTEN TO

ME

